

KHF new Procedures **RED**
Actual Flight Profile ... **Yellow**

Only **45 ft** Tree Clearance height
(Railway boundary trees 30-40ft above ground)

RUNWAY

520m Radius
52kt at 3deg/sec
(3deg/sec = Rate 1 Turn)

LPL-MAN Railway

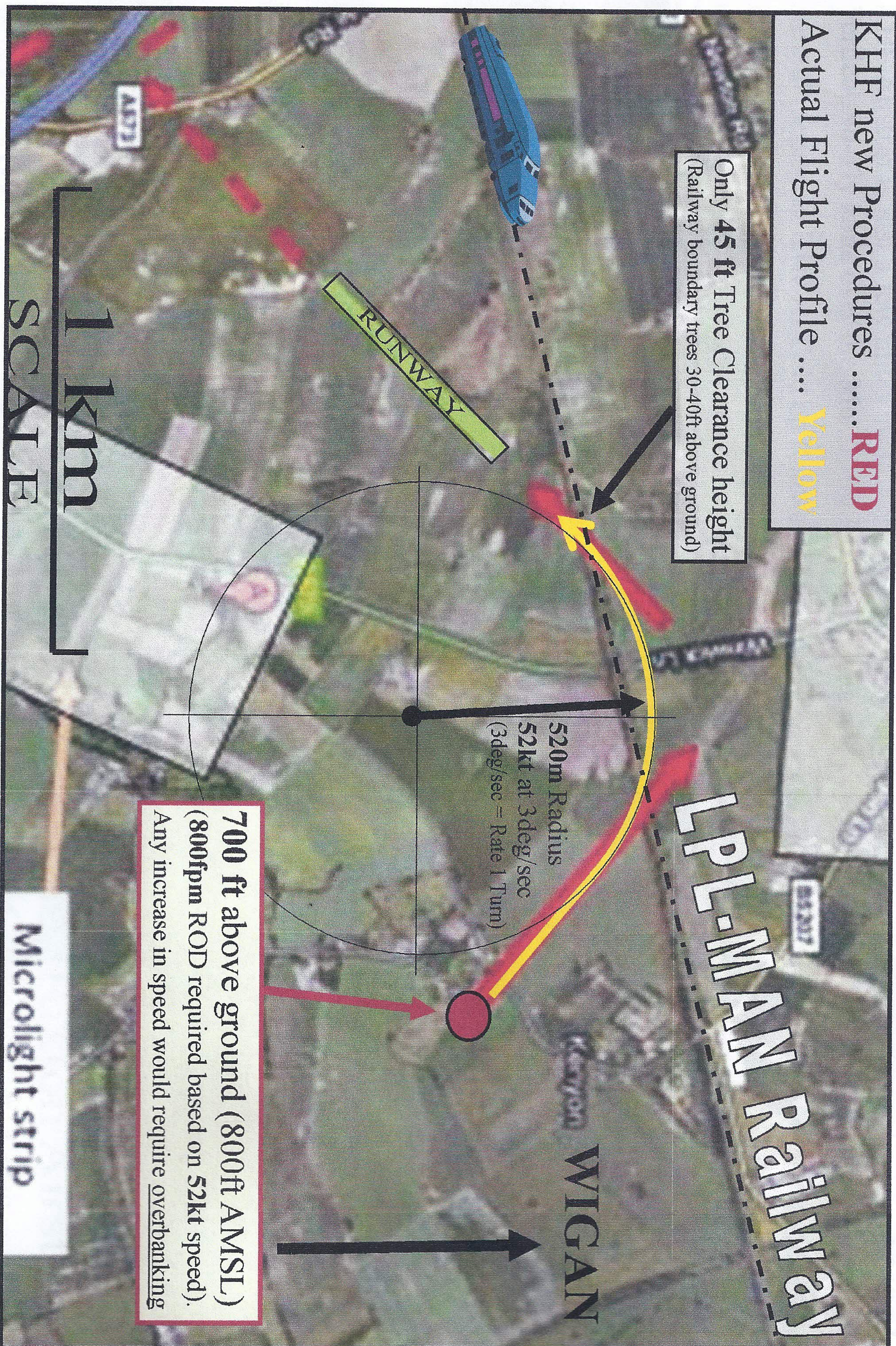
WIGAN

700 ft above ground (800ft AMSL)
(800fpm ROD required based on 52kt speed).
Any increase in speed would require overbanking

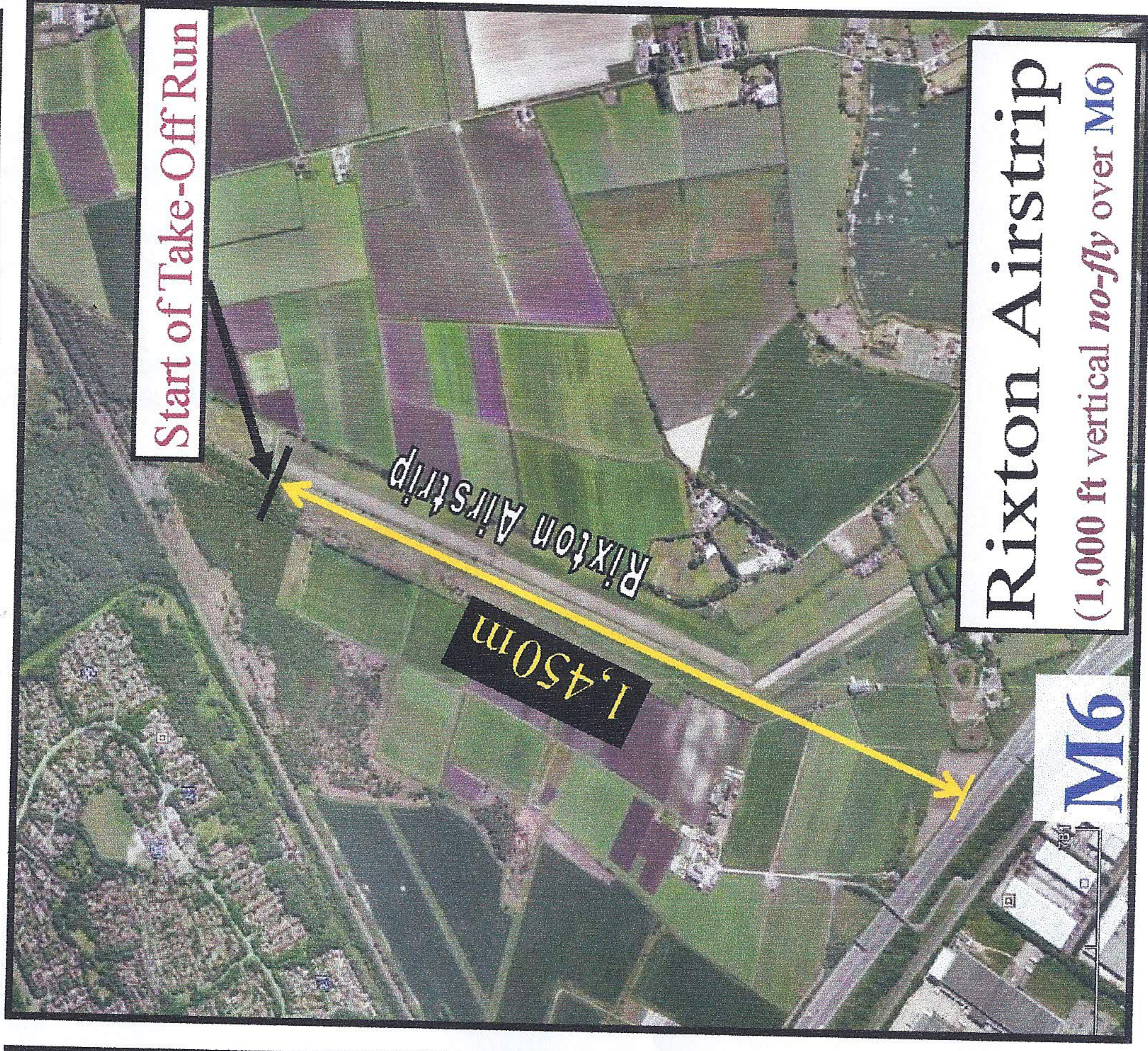
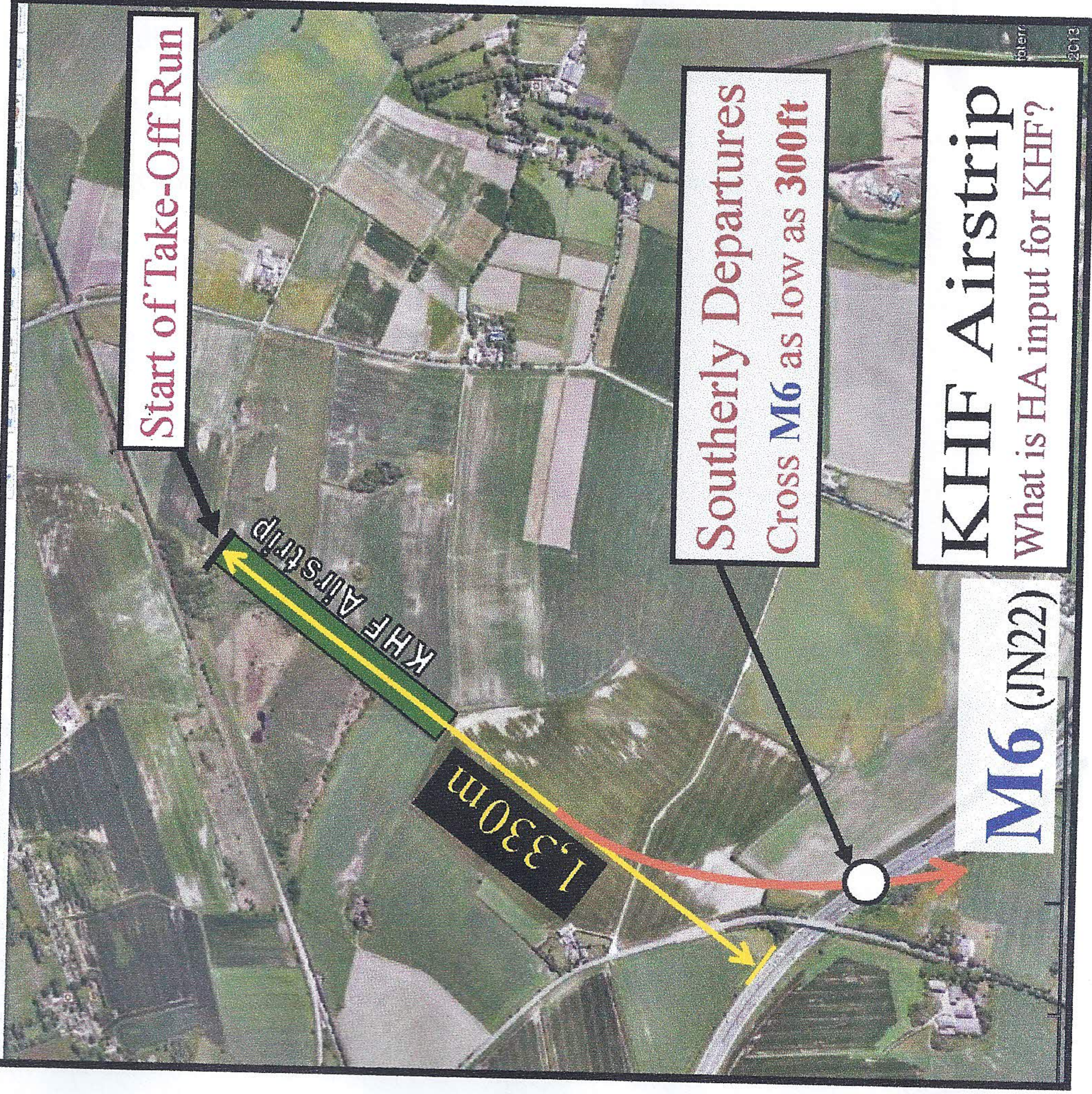
1 km

SCALE

Microlight strip



KHF Airstrip is just a few miles away from Rixton Airfield. The Highways Agency has accepted a **1,000 ft Vertical No-Fly zone** over the **M6** for Rixton arriving and departing aircraft (save for emergencies). Aircraft departing KHF Airfield on Runway 23 do so at a closer distance to the **M6** than Rixton departures. KHF Southerly departures on Runway 23 are instructed to cross the busy **M6** Motorway (resulting in possible heights of approximately **300ft** well below the Rixton *No-Fly* height of 1,000ft). **What is the Highway Agency's input on KHF?**



Correspondence from LHSRG

Dear Mr Billington,

On behalf of the Airfield Watch Group, a sub-Committee of Lane Head South Residents Group, we would like to express our concerns and worries about the safety procedures in place on Farmland used as an Airfield at Kenyon Hall Farm Winwick Lane, Lowton. A number of our members use the Rail Service into Manchester from Newton-le-Willows Station as well as some who use the M6 Motorway joining at Junction 22 travelling north.

A majority of the local residents are worried and concerned at your findings regarding safety procedures, or the lack of them and trust that the Secretary for State, will decide upon action to ideally stop the use of this very unsuitable located airfield in the interests of safety, before there is a fatal accident.

As a PPL (Holder of a Private Pilots Licence), I would normally be the last one to object to a local airfield, but, my flying knowledge and experience indicate to me just how unsuitable this location is for this activity.

Again, many thanks for your support which is most appreciated. We just hope and pray that action is taken to prohibit further use of this Airfield by LAC.

Kind regards

Brian H Lobell
AWG, LHSRG

21 April 2013

Correspondence from LENDF

Dear Sirs

As a local residents forum we have discussed the operations of Kenyon Hall Farm Airfield at our meetings and all members voiced various concerns on the grounds of health and safety and nuisance flying over residential properties.

LENDF support the Airfield Watch Group and Lane Head South Residents Group.

Yours faithfully

Ed Thwaite, and Irene Thomson
Chairman, and Secretary.

08 May 2013

LENDF

www.lendf.co.uk

Lowton East

Neighbourhood Development Forum